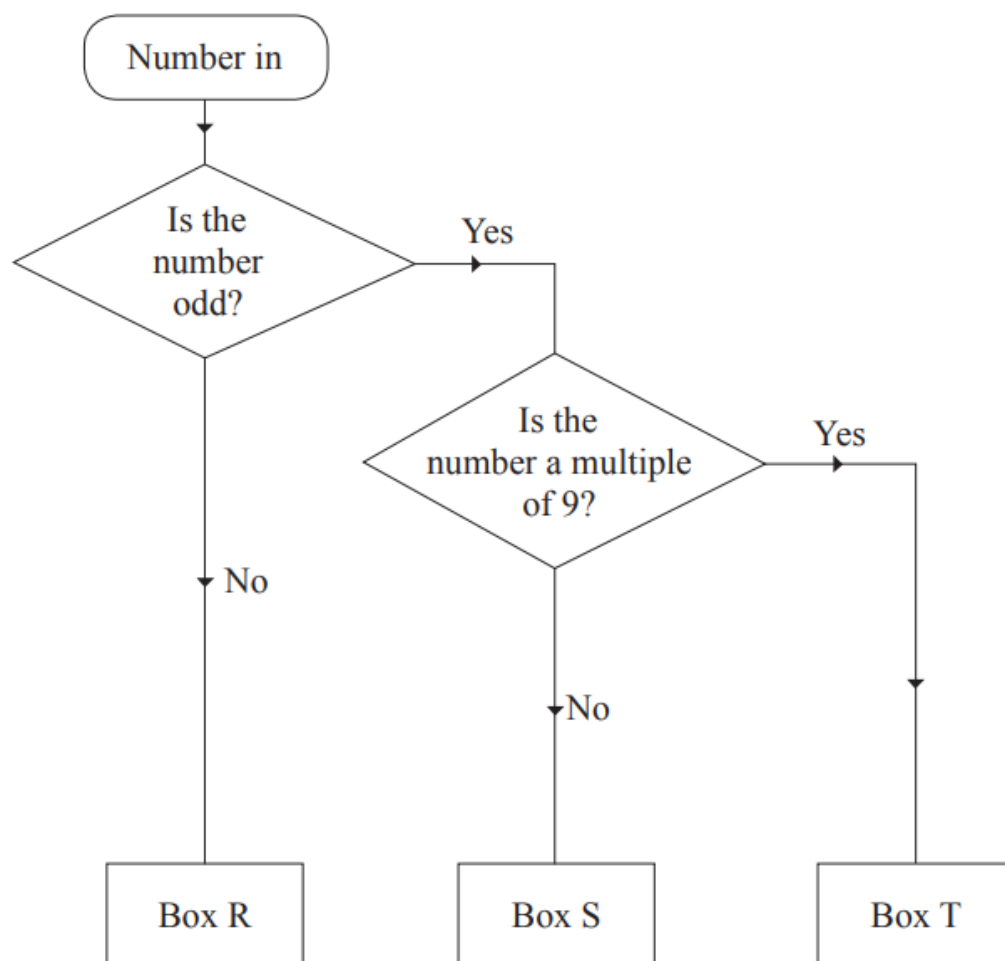


# m2 = 6 days to go!

9



Using the decision tree diagram, name the box for

(a) 35

Answer Box \_\_\_\_\_

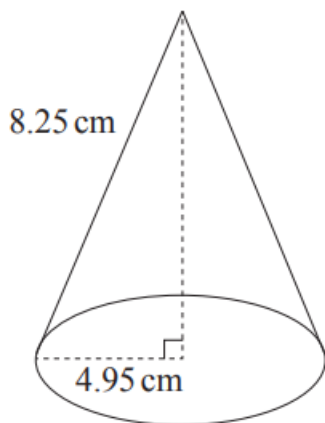
(b) 22

Answer Box \_\_\_\_\_

(c) 27

Answer Box \_\_\_\_\_ [2]

- 26** A cone has a slant height of 8.25 cm and a radius of 4.95 cm.



Calculate the vertical height of the cone.

Answer \_\_\_\_\_ cm [3]

- 27** The weekly wages of eight office workers are listed below.

£202   £212   £221   £242   £250   £250   £260   £284

One person's wage of £110 was not on the list. If this wage is now included, write down whether each of the following will increase, decrease or stay the same.

- (a) the mean wage will \_\_\_\_\_ [1]
- (b) the modal wage will \_\_\_\_\_ [1]
- (c) the median wage will \_\_\_\_\_ [1]
- (d) the range of the wages will \_\_\_\_\_ [1]