

# **m2 = 7 days to go!**

**12** Calculate the size of angle  $x$  in this quadrilateral.

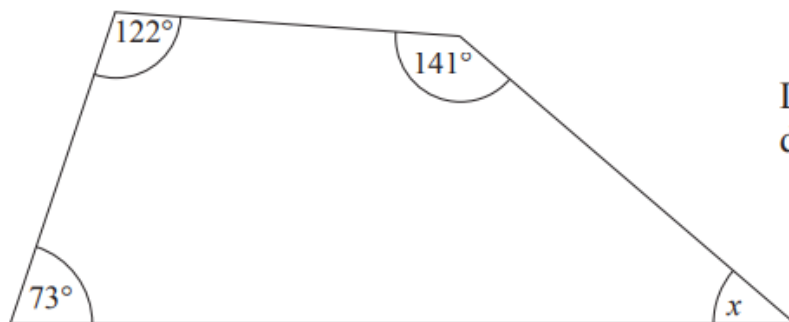


Diagram not  
drawn accurately

**4** A train leaves Acton station at 2.30pm and arrives in Bron at 4.15 pm.

A planned upgrade to the railway track will cut travelling time by 20%.

After the upgrade is done, at what time will the 2.30 pm train from Acton arrive in Bron?

Answer \_\_\_\_\_ [3]

5 Conal’s calculator shows the number

1378.7653

Round this number to

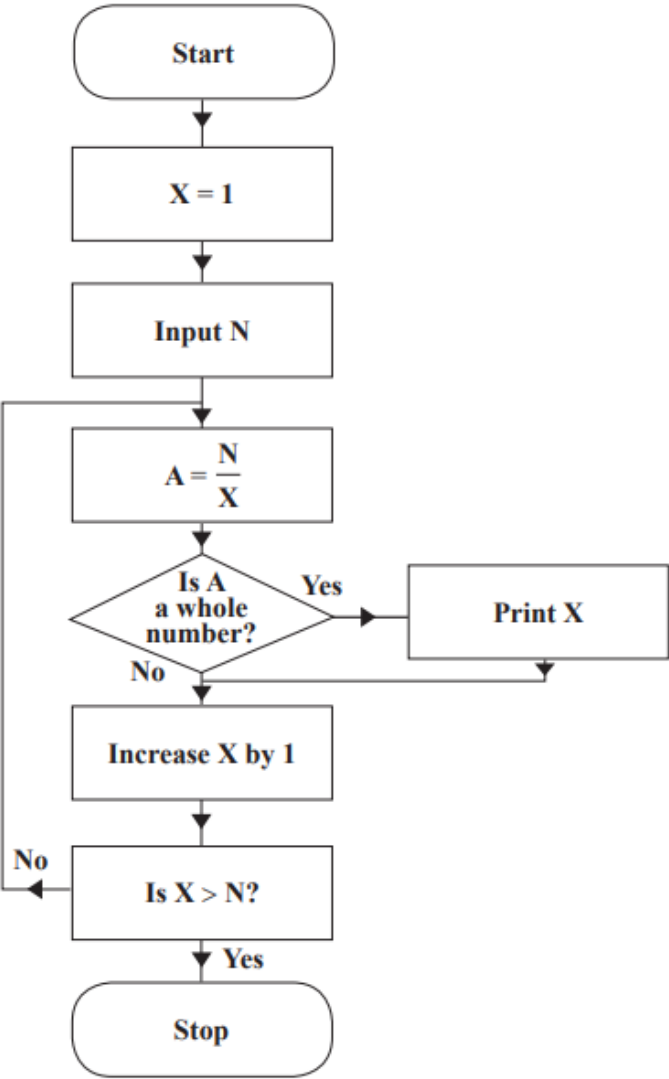
(a) the nearest hundred,

Answer \_\_\_\_\_ [1]

(b) one decimal place.

Answer \_\_\_\_\_ [1]

28 A flow chart is drawn below.



The number N = 18 is entered into the flow chart.

(a) What values of X are printed out?

Answer \_\_\_\_\_ [3]

(b) Describe what the flow chart does.

\_\_\_\_\_ [1]