

m2 = 7 days to go!

12 Calculate the size of angle x in this quadrilateral.

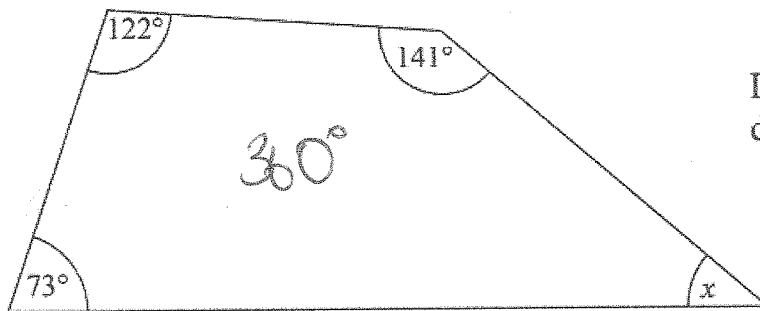


Diagram not
drawn accurately

$$\begin{aligned}
 122 + 141 + 73 + x &= 360 \\
 336 + x &= 360 \\
 \textcircled{-336} \quad \textcircled{-336} \\
 x &= 24
 \end{aligned}$$

4 A train leaves Acton station at 2.30pm and arrives in Bron at 4.15pm.

A planned upgrade to the railway track will cut travelling time by 20%.

After the upgrade is done, at what time will the 2.30pm train from Acton arrive in Bron?



Total. 105 minutes

$$\begin{aligned}
 20\% \text{ of } 105 &= 0.20 \times 105 = 21 \\
 \text{saves } \textcircled{21} \text{ minutes}
 \end{aligned}$$

Answer 3:54^[3]

3:54 pm

5 Conal's calculator shows the number

1378.7653

Round this number to

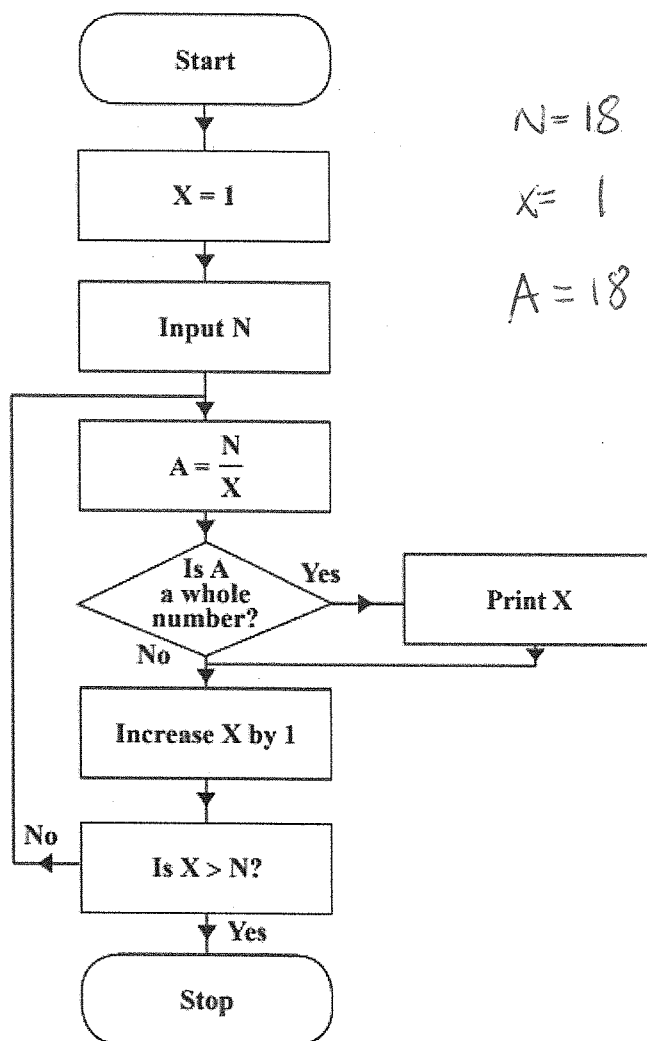
(a) the nearest hundred,

Answer 1400 [1]

(b) one decimal place.

Answer 1378.8 [1]

28 A flow chart is drawn below.



$N=18$ $N=18$
 $X=1$ $X=2$ $X=3$ $X=4$ 5
 $A=18$ $A=9$ 6 NOT printed NOT

The number $N = 18$ is entered into the flow chart.

(a) What values of X are printed out?

Answer 1, 2, 3, 6, 9, 18 [3]

(b) Describe what the flow chart does.

Prints out the factors of N

_____ [1]