

m2 = 9 days to go!

- 16 (a) Write an expression for the total cost in £ of x books at £3 each and y books at £7 each.

Answer £ $3x + 7y$ [2]

- (b) Factorise

Factories make brackets

(i) $5t + 35$

$5(t + 7)$

Answer $5(t + 7)$ [1]

(ii) $p^2 - 9p$

Answer $p(p - 9)$ [1]

23. The area of the right-angled triangle PQR is 24m^2

Pythagoras' Perhaps

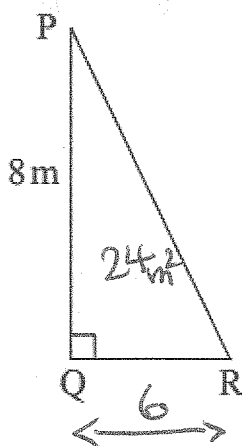
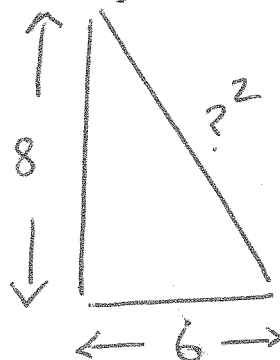


diagram not drawn accurately



$$\text{Area} = \frac{b \times h}{2}$$

$$\text{Area} = \frac{6 \times 8}{2}$$

$$\text{Area} = 24\text{m}^2$$

Calculate the length of PR.

Show all your working.

$$\begin{aligned} 6^2 + 8^2 &= ?^2 \\ 36 + 64 &= ?^2 \\ 100 &= ?^2 \end{aligned}$$

Ans 10m

- 6 A teacher buys 40 calculators at £9.59 each and a number of cheaper calculators at £5.75 each. The total cost is £487.10

How many cheaper calculators does she buy?

$$40 \times 9.59 = 383.60 \text{ for expensive calculators}$$

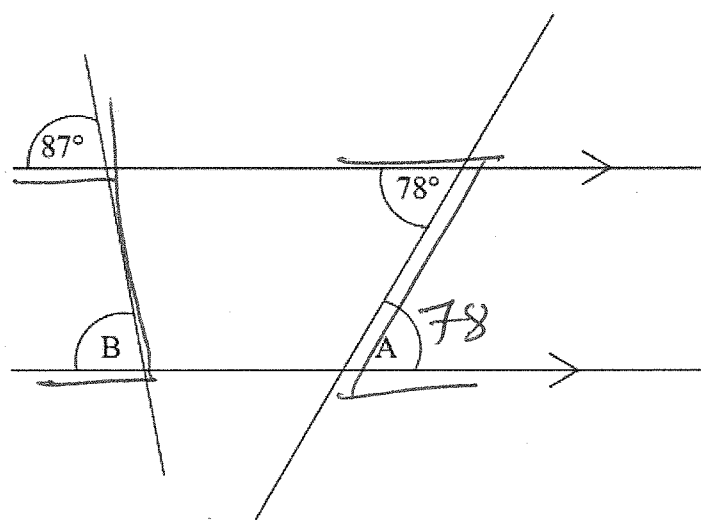
$$487.10 - 383.60 = 103.50$$

so 103.50 is spent on cheaper calculators

$$103.50 \div 5.75 = 18$$

Answer 18 [3]

21



$\begin{matrix} \rightarrow & \uparrow & \nearrow & \nwarrow \\ C & I & A \end{matrix}$

diagram
not
drawn
accurately
corresponding
interior
alternate

Find the size of angle

(a) A

Answer 78 ° [1]

(b) B

Answer 87 ° [1]