

M3 = 32 days to go!

1 Tickets for a show are priced as shown:

Adult £14	Senior Citizen £8	Child £5
-----------	-------------------	----------

Mrs Evans spent £57 on 6 tickets.

She bought 1 Child ticket.

How many Adult and Senior Citizen tickets did she buy?

$$57 - 5 = 52$$

Find 14 & 8 that add together to get 52

$$14 + 14 + 8 + 8 + 8 = 52$$

2 Adult
3 Senior Citizen

10 Factorise

(a) $8b + 12$

FACTORISE

FACTORIES make brackets

~~8~~ $4(2b + 3)$

Answer $4(2b + 3)$ [1]

(b) $t^2 - t$

~~$t(t^2)$~~

Answer $t(t-1)$ [1]

$$t(t-1)$$

You can multiply out to check

$$\overbrace{t(t-1)}$$

$$t^2 - t$$

18 The longest side in a right-angled triangle is 12 cm.

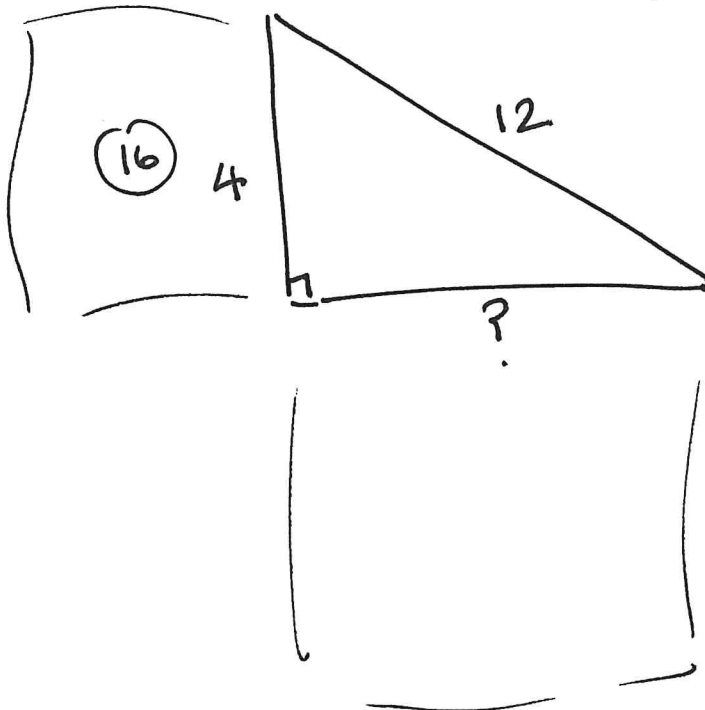
One of the shorter sides is 4 cm.

Calculate the perimeter of the triangle.

Give your answer correct to 1 decimal place.

Pythagoras' Theorem

144



$$4^2 + ?^2 = 12^2$$
$$16 + ?^2 = 144$$

$$?^2 = 144 - 16$$

$$?^2 = 128$$

$$\sqrt{128}$$

$$? = 11.3$$

$$\text{Perimeter} = 4 + 11.3 + 12$$
$$= 27.3$$

Ans 27.3 cm