

M3 = 34 days to go!

4 Jenny opens a "Charity Bank Account". Any interest gained goes to a local charity.

It pays 2% per annum simple interest.

She puts £1500 into the account.

She does not make any deposits or withdrawals.

How much interest will the charity have received after 3 years?

$$2\% \text{ of } 1500 = \pounds 30$$

£30 each year.

$$\pounds 1500 + \underbrace{\pounds 30 + \pounds 30 + \pounds 30}_{\pounds 90}$$

Ans £90 interest

15 Expand and simplify

$$4(2x - 3) - 2(x - 5)$$

$$8x - 12 - 2x + 10$$

Think

Answer 6x - 2 [2]

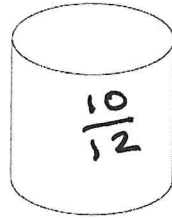
$$\text{---} \times \text{---}$$

$$= \text{---}$$

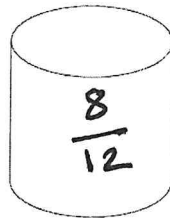
11 Three identical barrels are collecting rainwater.



A



B



C

Barrel A is $\frac{3}{4}$ full.

Barrel B is $\frac{5}{6}$ full.

Barrel C is $\frac{2}{3}$ full.

) go to common denominator.

The water in Barrel C is poured into Barrels A and B.

Can Barrels A and B be filled?

You must show working to justify your answer.

$$\frac{3}{4} = \frac{9}{12}$$

$$\frac{5}{6} = \frac{10}{12}$$

$$\frac{2}{3} = \frac{8}{12}$$

Yes. Barrel A needs $\frac{3}{12}$ more

Barrel B needs $\frac{2}{12}$ more.