

$$\sqrt{25} = \pm 5$$

11 (a) Write down the two numbers that are the square roots of 25

Answer +5 and -5 [1]

(b) Simplify the expression

$$\frac{e}{5} - \frac{e}{7}$$

$$\frac{7e}{35} - \frac{5e}{35}$$

$$= \frac{2e}{35}$$

Think $\frac{1}{5} - \frac{1}{7}$
you get a
common denominator
 $\frac{7}{35} - \frac{5}{35}$

Answer $\frac{2e}{35}$ [3]

13 A circular glass shaving mirror has a diameter of 21 cm.



© clark_fang /iStock / Thinkstock

It has glass on both sides.

Calculate the total area of glass correct to the nearest whole number.

$$A = \pi r^2$$

$$A = \pi \times 10.5^2$$

$$A = 346.36$$

then $\times 2$

$$692.72$$

Answer 693 cm² [3]

Keep in The
calculator

nearest
whole
number

1 (a) Factorise

(i) $8rt + 12t^2$

$$4t(2r + 3t)$$

Answer $4t(2r + 3t)$ [2]

(ii) $k^2 - 16$

D.O.T.S.

Answer $(k+4)(k-4)$ [1]

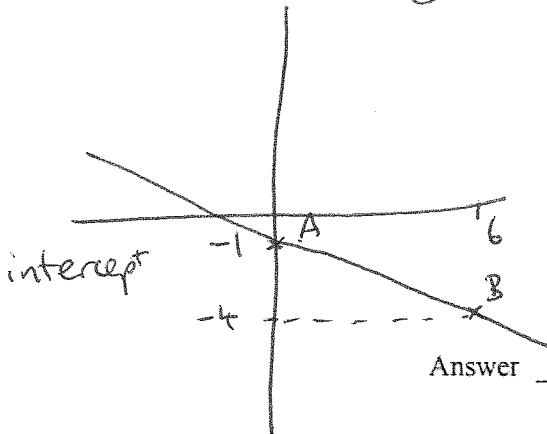
MA = 71 days to go!

- 6 (a) Find the equation of the line joining the points A (0, -1) and B (6, -4).

Draw a diagram

$$\text{Gradient} = -\frac{3}{6}$$

$$= -\frac{1}{2}$$

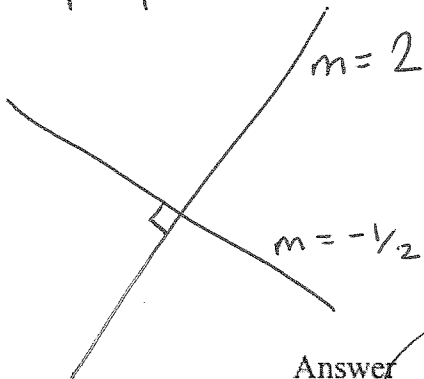


Answer $y = -\frac{1}{2}x - 1$ [3]

- (b) Find the equation of the line perpendicular to AB which passes through B.

perpendicular

$$m \times m = -1$$



Put in point (6, -4)

$$y = 2x + c$$

$$-4 = 2(6) + c$$

$$-4 = 12 + c$$

$$-16 = c$$

Answer $y = 2x - 16$ [3]