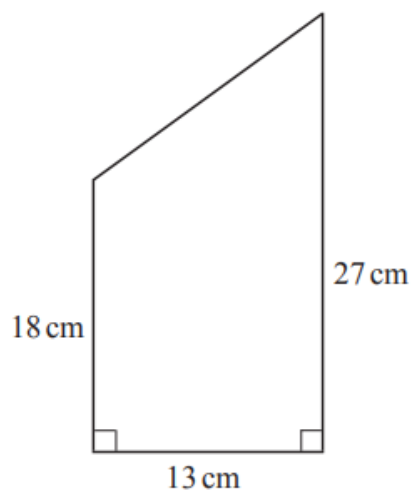


MA = 17 days to go!

3 Find the area of this trapezium.



Answer _____ cm² [2]

28 Solve

$$\frac{3x-2}{6} - \frac{x-2}{3} = \frac{7}{4}$$

Show all your working.

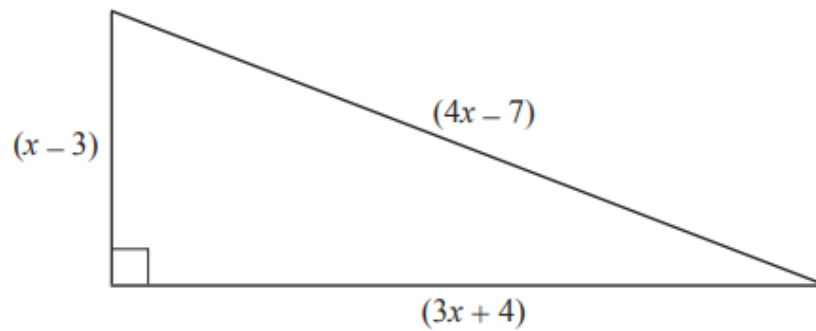
A solution by trial and improvement will not be accepted.

Answer $x =$ _____ [4]

13 In the triangle shown find x and hence the length of the longest side.

A solution by trial and improvement will not be accepted.

Show all your working.



Answer $x =$ _____ longest side = _____ [7]

4 A special offer shampoo bottle contains 20% extra.

It contains 900 ml of shampoo.

How much shampoo was in the original bottle?

Answer _____ ml [3]