

M4 = 37 days to go!

2 Expand and simplify

$$4(2x-3) - 2(x-5)$$

$$8x - 12 - 2x + 10$$

$$6x - 2$$

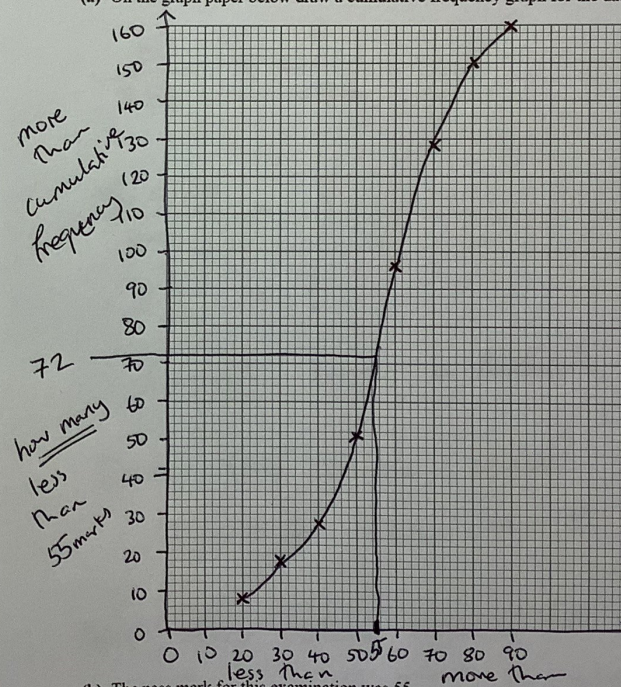
Answer _____ [2]

13 160 pupils in Year 8 sat a Science examination at the end of the year.

Their results are given in the cumulative frequency table below.

Examination Mark, x	Cumulative Frequency
$x \leq 20$	8
$x \leq 30$	18
$x \leq 40$	28
$x \leq 50$	51
$x \leq 60$	96
$x \leq 70$	128
$x \leq 80$	150
$x \leq 90$	160

(a) On the graph paper below draw a cumulative frequency graph for the data given.



curve

points at the top of the interval.

[3] mark less than

(b) The pass mark for this examination was 55

Use your graph to estimate the number of pupils who passed the examination.

$$160 - 72$$

Answer 88 [2]

Depends on your curve