

M8 = 26 days to go!

2 Work out the n^{th} term of the sequence 6, 3, 0, -3, ...



Answer 9 - 3n [2]

-3n -3 -6 -9 -12 -15

9 - 3n

9

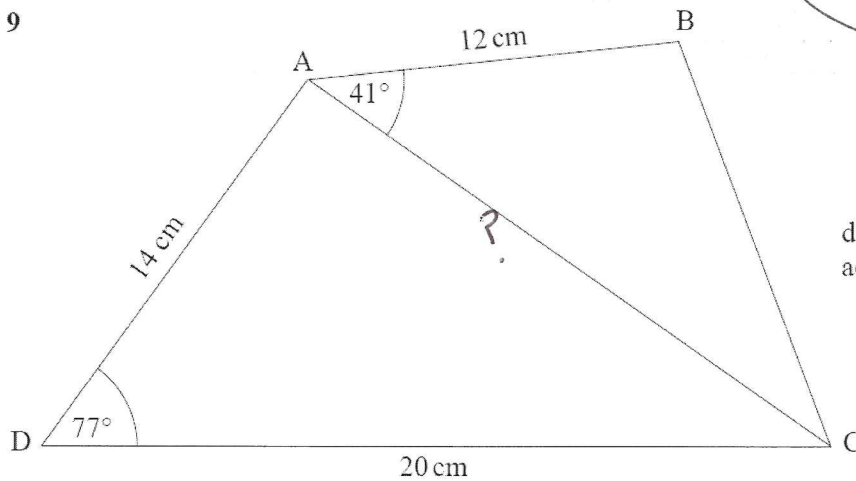
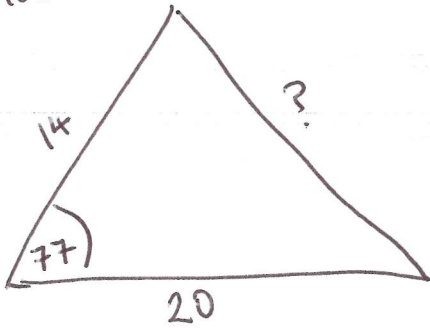


diagram not drawn accurately

$$A = \frac{1}{2} ab \sin C$$

Find the area of the triangle ABC.

Find distance AC

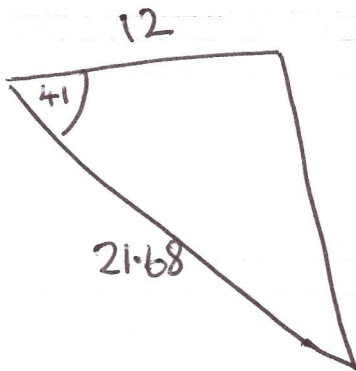


use Cosine Rule.

$$?^2 = 14^2 + 20^2 - 2 \times 14 \times 20 \cos 77$$

$$?^2 = 470$$

$$? = 21.68$$



Answer 85.3 cm² [5]

$$\text{Area} = \frac{1}{2} \times 12 \times 21.68 \sin 41$$

$$\text{Area} = 85.3$$